

2024 CATALOGUE

 **PODiMA**



High protection  
made with  
comfort

## Protective Clothing

Your reliable partner for personal protective equipment, including coveralls, protective gowns, hoods, shoe covers, nitrile gloves and protective masks.



STANDARD  
100

 **SUVICOM**<sup>®</sup>

 **rowimed**<sup>®</sup>

 **Razddax**<sup>®</sup>



## Gowns

Disposable visitor, examination and surgical gowns for medical sector to protect health professionals, patients and visitors against viruses and germs. Also applicable in food industry, manufacturing, laboratories and pharmacies.

## Coveralls

Disposable coveralls ensure protection against infective agents, chemical splashes and other particles. Manufactured of a soft and breathable material coveralls offer comfort and full-body protection.



## Hoods

Disposable hoods ensure multiple protections for open wounds during surgeries. Additionally, disposable hoods avoid food to be contaminated by hair or dandruff in food industry or gastronomy.

## Shoe covers

Applicable in medical sector and food industry, shoe covers avoid contamination and offer protection both for ground (e.g. sandy shoes on damp ground) and shoes (e.g. protection from dust or paints during renovation works).



## Towel & Sheets



## CONTENTS

Gowns	4
Coveralls	19
Hoods & Bonnets	26
Shoe Covers	28
Mask	31
Bed Sheet	34
Towels & Sheets	35
Certificates	41
Production Process	42

### CERTIFICATIONS AND STANDARDS



# Gowns

## FOR SAFETY OF ALL IN HEALTHCARE SETTINGS

Examination gowns are especially suitable for general medical practice and sensitive areas such as operating theatres. This gown is used to protect health professionals against contamination with bacteria and viruses in hospitals, operating theatres, laboratories or other medical facilities.

 **PODiMA**

 **SUVICOM**<sup>®</sup>

 **rowimed**<sup>®</sup>

 **Raddax**<sup>®</sup>





## DISPOSABLE VISITOR GOWN

Visitor gowns are used for minimal risk situations which contain slight barrier to small fluid penetration. The gowns are breathable and comfortable to wear.

### ■ COLORS



### ■ SERVICES



SIZE	XS	S	M	L	XL	2XL	3XL	4XL	Tolerans
A	56	56	56	56	56	56	58	58	+/- 3 cm
B	58	59	60	61	62	63	64	65	+/- 3 cm
C	105	110	115	120	125	130	135	140	+/- 3 cm
D	130	135	140	145	150	155	160	165	+/- 3 cm

## SV- 180

### DETAILS

Model: SV-180 series  
 Fabric: PP (spunbond+spunbond)  
 Weight: 17 - 80 GSM  
 Cuff: Elastic/Knitted  
 Color: White/Yellow/Blue/Green  
 Stitch: Overlock  
 Other: Waist and neck straps for a secure fit  
 Optional: Tie on neck - Velcro neck  
 Sterile/Non Sterile

For more informatin  
 please refer to the data sheets.



## DISPOSABLE ISOLATION GOWN (PP+PE)

Examination gowns are especially suitable for general medical practice and sensitive areas such as operating theatres. This gown is used to protect health professionals against contamination with bacteria and viruses in hospitals, operating theatres, laboratories or other medical facilities.

### COLORS



### SERVICES



SIZE	XS	S	M	L	XL	2XL	3XL	4XL	Tolerans
A	56	56	56	56	56	56	58	58	+/- 3 cm
B	58	59	60	61	62	63	64	65	+/- 3 cm
C	105	110	115	120	125	130	135	140	+/- 3 cm
D	130	135	140	145	150	155	160	165	+/- 3 cm

## SV- 140

### DETAILS

Model: SV- 140-SV-141-SV-142-SV-143-SV-144-SV-145-SV-146-SV-147-SV-148-SV-149 series  
 Fabric: PP+PE, SMS, SMMS, SSMMS, SSMMLS, SMS+PE  
 Weight: 30-80 GSM  
 Cuff: Elastic/Knitted  
 Color: Blue/Yellow/Green/White  
 Stitch: Overlock / Ultrasonic seam  
 Other: Waist and neck straps for a secure fit  
 Tie on neck - Velcro neck  
 Sterile/Non Sterile

For more information please refer to the data sheets.



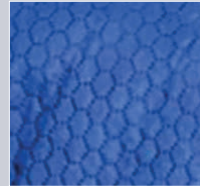
Velcro neck



Tie on belt



Knitted cuff



SSMMS/ Comfort



## DISPOSABLE SURGICAL GOWN (SMMS)

Surgical gowns are made of comfortable non-woven fabric and contain high-quality four layers of SMMS (spunbond+meltblown + meltblown + spunbond) fabric. This gown is used to protect health professionals against contamination with bacteria and viruses in hospitals, operating theatres, laboratories or other medical facilities.

## DISPOSABLE SURGICAL GOWN (SSMMS)

Surgical gowns are made of comfortable non-woven fabric and contain high-quality four layers of SSMMS (spunbond +spunbond + meltblown + meltblown+spunbond) fabric. This gown is used to protect health professionals against contamination with bacteria and viruses in hospitals, operating theatres, laboratories or other medical facilities.

### SV- 141

#### DETAILS

Model: SV- 140-SV-141-SV-142-SV-143-SV-144  
SV-145-SV-146-SV-147-SV-148-SV-149  
series  
Fabric: PP+PE, SMS, SMMS, SSMMS, SSMMLS,  
SMS+PE  
Weight: 25-80 GSM  
Cuff: Elastic/Knitted  
Color: White/Yellow/Blue/Green  
Stitch: Overlock/Ultrasonic  
Other: Waist and neck straps for a secure fit  
Optional: Sterile/Non Sterile Velcro neck

For more informatin please refer to the data sheets.

### SV- 142

#### DETAILS

Model: SV- 140-SV-141-SV-142-SV-143-SV-144  
SV-145-SV-146-SV-147-SV-148-SV-149  
series  
Fabric: PP+PE, SMS, SMMS, SSMMS, SSMMLS,  
SMS+PE  
Weight: 25-80 GSM  
Cuff: Elastic/Knitted  
Color: White/Yellow/Blue/Green  
Stitch: Overlock/Ultrasonic  
Other: Waist and neck straps for a secure fit  
Optional: Sterile/Non Sterile Velcro neck

For more informatin please refer to the data sheets.

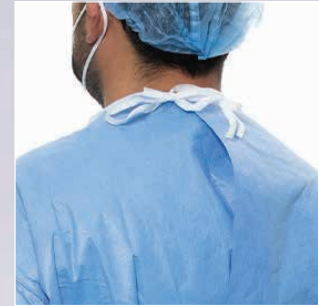
#### COLORS



#### SERVICES

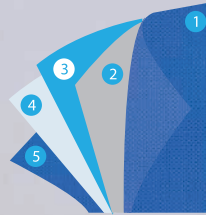






Triplex Reinforced Breathable Laminated Fabric for Surgical Gown

- 1 SSMMMS Spunbond
- 2 Hotmelt
- 3 Triple - Layered PE Film
- 4 Hotmelt
- 5 SSMMMS Spunbond



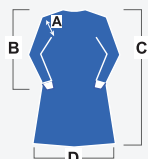
## HIGH PROTECTION SURGICAL GOWN (SSMLMS + PE)

Protective surgical gown is made of light and breathable material to use in healthcare environments to protect health professionals and staff against the transmission of microorganisms and body fluids. It is also comfortable and easy to tie at the waist and collar at the back.

### COLORS



### SERVICES



SIZE	XS	S	M	L	XL	2XL	3XL	4XL	Tolerans
A	56	56	56	56	56	56	58	58	+/- 3 cm
B	58	59	60	61	62	63	64	65	+/- 3 cm
C	105	110	115	120	125	130	135	140	+/- 3 cm
D	130	135	140	145	150	155	160	165	+/- 3 cm

## SV- 143

### DETAILS

- Model: SV- 140-SV-141-SV-142-SV-143-SV-144-SV-145-SV-146-SV-147-SV-148-SV-149 series
- Fabric: PP+PE, SMS, SMMS, SSMMMS, SSMMLS, SMS+PE
- Weight: 55 -90 GSM
- Cuff: Elastic/Knitted
- Color: Blue
- Stitch: Overlock/ Ultrasonic seam
- Other: Waist and neck straps for a secure fit
- Optional: Static/Antistatic  
Tie on neck - Velcro neck  
Sterile/Non Sterile

For more informatin please refer to the data sheets.





## DISPOSABLE **Reinforced** SURGICAL GOWN

Highly protective (Level 4) surgical gowns are used in healthcare environments, particularly operating theatres, to protect health professionals and staff against the transmission of microorganisms and body fluids. These gowns ensure highest resistance to moisture and bacteria penetration, puncture, tear, abrasion and toxic substances.

### ■ COLORS



### ■ SERVICES



SIZE	XS	S	M	L	XL	2XL	3XL	4XL	Tolerans
A	56	56	56	56	56	56	58	58	+/- 3 cm
B	58	59	60	61	62	63	64	65	+/- 3 cm
C	105	110	115	120	125	130	135	140	+/- 3 cm
D	130	135	140	145	150	155	160	165	+/- 3 cm

## SV-144

### DETAILS

Model: SV-140-SV-141-SV-142-SV-143-SV-144  
SV-145-SV-146-SV-147-SV-148-SV-149 series

Fabric: PP+PE, SMS, SMMS, SSMMS, SSMMLS, SMS+PE

Weight: 45-80 GSM

Cuff: Elastic/Knitted

Color: Blue

Stitch: Overlock/ Ultrasonic seam

Other: Waist and neck straps for a secure fit

Optional: Tie on neck - Velcro neck

Sterile/Non Sterile

**For more informatin  
please refer to the data sheets.**



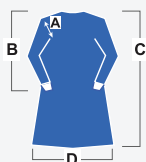
## DISPOSABLE **Reinforced** ISOLATION GOWN (PP+PE)

Examination gowns are especially suitable for sensitive areas such as operating theatres. It is particularly characterized by its tightness, therefore is also certified to EN14126.

### COLORS



### SERVICES



SIZE	XS	S	M	L	XL	2XL	3XL	4XL	Tolerans
A	56	56	56	56	56	56	58	58	+/- 3 cm
B	58	59	60	61	62	63	64	65	+/- 3 cm
C	105	110	115	120	125	130	135	140	+/- 3 cm
D	130	135	140	145	150	155	160	165	+/- 3 cm

## SV- 144

### DETAILS

Model: SV- 140-SV-141-SV-142-SV-143-SV-144  
SV-145-SV-146-SV-147-SV-148-SV-149  
series

Fabric: PP+PE, SMS, SMMS, SSMMS, SSMMLS,  
SMS+PE

Weight: 35-80 GSM

Cuff: Elastic/Knitted

Color: Blue/Yellow/Green/White

Stitch: Overlock / Ultrasonic seam

Other: Waist and neck straps for a secure fit

Optional: Tie on neck - Velcro neck  
Sterile/Non Sterile

For more information  
please refer to the data sheets.



## DISPOSABLE **Reinforced** SURGICAL GOWN / **Ultimate**

Highly fluid repellent gown for advanced protection. Ultimate offers maximum breathability for ultimate comfort.

High performance gown with impermeable front and sleeves for added protection against strike through. The gown cuff is compatible with gloves, preventing gloves from sliding off.

Available in High and Standard performance gowns. Conformable material. Shoulder pleats allow freedom of movement for the upper body.

### ■ COLORS



### ■ SERVICES



SIZE	XS	S	M	L	XL	2XL	3XL	4XL	Tolerans
A	56	56	56	56	56	56	58	58	+/- 3 cm
B	58	59	60	61	62	63	64	65	+/- 3 cm
C	105	110	115	120	125	130	135	140	+/- 3 cm
D	130	135	140	145	150	155	160	165	+/- 3 cm

## SV- 144

### DETAILS

Model: SV- 140-SV-141-SV-142-SV-143-SV-144  
SV-145-SV-146-SV-147-SV-148-SV-149  
series

Fabric: PP+PE, SMS, SMMS, SSMMMS, SSMMMLS,  
SMS+PE

Weight: 45-80 GSM

Cuff: Elastic/Knitted

Color: Blue

Stitch: Overlock/ Ultrasonic seam

Other: Waist and neck straps for a secure fit

Optional: Tie on neck - Velcro neck

Sterile/Non Sterile

For more information,  
please refer to the data sheets.



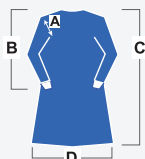
## DISPOSABLE EXAMINATION GOWN (SMS)

Disposable Surgical gowns are made of soft “spunbond + meltblown + spunbond” fabric. The gown is robust, breathable and liquid resistant with bacteria barrier and antiallergic protection. The gown also ensures protection against blood and other body fluids.

### ■ COLORS



### ■ SERVICES



SIZE	XS	S	M	L	XL	2XL	3XL	4XL	Tolerans
A	56	56	56	56	56	56	58	58	+/- 3 cm
B	58	59	60	61	62	63	64	65	+/- 3 cm
C	105	110	115	120	125	130	135	140	+/- 3 cm
D	130	135	140	145	150	155	160	165	+/- 3 cm

## SV- 145

### DETAILS

- Model: SV- 140-SV-141-SV-142-SV-143-SV-144-SV-145-SV-146-SV-147-SV-148-SV-149 series
- Fabric: PP+PE, SMS, SMMS, SSMMS, SSMMLS, SMS+PE
- Weight: 20-80 GSM
- Cuff: Elastic/Knitted
- Color: White/Yellow/Blue/Green
- Stitch: Overlock - Ultrasonic
- Other: Waist and neck straps for a secure fit
- Optional: Tie on neck - Velcro neck  
Sterile/Non Sterile

For more information please refer to the data sheets.





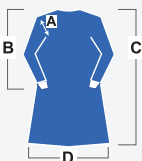
## DISPOSABLE SURGICAL GOWN (Thermoband Striped Gown)

Protective gown is made of light and breathable material to use in clinical and laboratory environments to protect health professionals, staff and visitors against the transmission of microorganisms and body fluids.

### ■ COLORS



### ■ SERVICES



SIZE	XS	S	M	L	XL	2XL	3XL	4XL	Tolerans
A	56	56	56	56	56	56	58	58	+/- 3 cm
B	58	59	60	61	62	63	64	65	+/- 3 cm
C	105	110	115	120	125	130	135	140	+/- 3 cm
D	130	135	140	145	150	155	160	165	+/- 3 cm

## SV- 146

### DETAILS

Model: SV- 140-SV-141-SV-142-SV-143-SV-144  
SV-145-SV-146-SV-147-SV-148-SV-149  
series  
Fabric: PP+PE, SMS, SMMS, SSMMS, SSMMLS,  
SMS+PE  
Weight: 40 - 80 GSM  
Cuff: Elastic/Knitted  
Color: Blue/Yellow/Green/White  
Stitch: Overlock/Welded  
Type: PB-3B / PB-4B / PB- 6B AAMI Level 2 - 3  
Other: Waist and neck straps for a secure fit  
Optional: Sterile/Non Sterile  
Velcro neck  
Ultrasonic seam

For more informatin  
please refer to the data sheets.



**Raglan Sewing**

**Standard Sewing**

## DISPOSABLE SURGICAL GOWN / Classic Spunlace

Soft, breathable comfort and ease of movement in the process. Surgical gowns Classic are designed to protect you during most procedures.

Barrier surgical gown Classic is made from a soft and breathable spunlace material for extra comfort.

Specially treated to repel low-tension surface fluids.

Forward facing long sleeves are designed to fit your natural working position and reduce the risk of glove sliding.

### ■ COLORS



### ■ SERVICES



SIZE	XS	S	M	L	XL	2XL	3XL	4XL	Tolerans
A	56	56	56	56	56	56	58	58	+/- 3 cm
B	58	59	60	61	62	63	64	65	+/- 3 cm
C	105	110	115	120	125	130	135	140	+/- 3 cm
D	130	135	140	145	150	155	160	165	+/- 3 cm

## SV- 147

### DETAILS

Model: SV- 140-SV-141-SV-142-SV-143-SV-144  
SV-145-SV-146-SV-147-SV-148-SV-149 series

Fabric: PP+PE, SMS, SMMS, SSMMS, SSMMLS, SMS+PE

Weight: 40 - 95 GSM

Cuff: Elastic/Knitted

Color: Blue/White

Stitch: Overlock/Welded

Type: PB-3B / PB-4B / PB- 6B AAMI Level 2 - 3

Other: Waist and neck straps for a secure fit

Optional: Sterile/Non Sterile

Velcro neck

Ultrasonic seam

For more information,  
please refer to the data sheets.



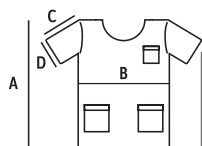
## V-NECK SET

V-neck set offer long-lasting warmth for the staff of operating room. The jacket is equipped with pockets based on requests

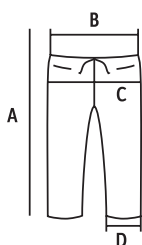
### COLORS



### SERVICES



	S	M	L	XL	2XL	3XL	Avarage
A	74	75	76	77	78	79	+/- 3cm
B	60	62	64	66	68	70	+/- 3cm
C	35	36	37	38	39	40	+/- 3cm
D	18	19	20	21	22	23	+/- 3cm



	S	M	L	XL	2XL	3XL	Avarage
A	102	104	106	108	110	112	+/- 3cm
B	52	54	57	61	64	67	+/- 3cm
C	54	56	59	63	66	69	+/- 3cm
D	21	22	23	24	25	26	+/- 3cm

## SV- 120

### DETAILS

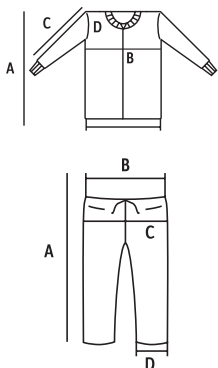
Model: SV- 120 series  
 Fabric: SS-SMS-SMMS  
 Weight: 30-80 GSM  
 Cuff: Knitted  
 Color: Blue/Yellow/Green/White  
 Stitch: Overlock/Welded  
 Other: Desings with two or three pockets  
 Optional: Sterile/Non Sterile

For more informatin  
 please refer to the data sheets.



## THERMAL SET & THERMAL JACKET

Thermal jackets offer long-lasting warmth for the staff of operating room. The jacket is equipped with pockets based on requests.



	S	M	L	XL	2XL	3XL	Average
A	73	75	77	79	81	83	+/- 3cm
B	55	57	59	61	63	65	+/- 3cm
C	59	60	61	62	63	64	+/- 3cm
D	28	28	28	28	29	29	+/- 3cm

	S	M	L	XL	2XL	3XL	Average
A	102	104	106	108	110	112	+/- 3cm
B	52	54	57	61	64	67	+/- 3cm
C	56	56	59	63	66	69	+/- 3cm
D	21	22	23	24	25	26	+/- 3cm

### COLORS



### SERVICES



## SV- 121

### DETAILS

Model: SV- 121 series  
 Fabric: SS-SMS-SMMS  
 Weight: 30-80 GSM  
 Cuff: Knitted  
 Color: Blue/Yellow/Green/White  
 Stitch: Overlock/Welded  
 Other: Desings with two or three pockets  
 Optional: Sterile/Non Sterile

For more informatin please refer to the data sheets.

## SV- 122

### DETAILS

Model: SV- 122 series  
 Fabric: SS-SMS-SMMS  
 Weight: 30-80 GSM  
 Cuff: Knitted  
 Color: Blue/Yellow/Green/White  
 Stitch: Overlock/Welded  
 Other: Desings with two or three pockets  
 Optional: Sterile/Non Sterile

For more informatin please refer to the data sheets.





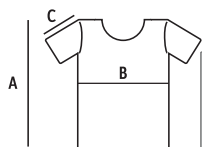
## KIMONO SET

Kimono Set are made of soft "spunbond + meltblown + spunbond" fabric. The gown is robust, breathable and liquid resistant with bacteria barrier and antiallergic protection. The gown also ensures protection against blood and other body fluids.

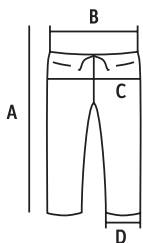
### COLORS



### SERVICES



	S	M	L	XL	2XL	3XL	4XL	Average
A	78	81	84	87	90	93	96	+/- 3cm
B	125	130	135	140	145	150	155	+/- 3cm
C	26	27	28	29	30	31	32	+/- 3cm



	S	M	L	XL	2XL	3XL	Average
A	102	104	106	108	110	112	+/- 3cm
B	52	54	57	61	64	67	+/- 3cm
C	54	56	59	63	66	69	+/- 3cm
D	21	22	23	24	25	26	+/- 3cm

## SV-123

### DETAILS

Model: SV-123 series  
 Fabric: SMS (spunbond+meltblown+spunbond)  
 Weight: 20-80 GSM  
 Cuff: Elastic/Knitted  
 Color: White/Yellow/Blue/Green  
 Stitch: Overlock - Ultrasonic  
 Other: Waist and neck straps for a secure fit  
 Optional: Tie on neck - Velcro neck  
 Sterile/Non Sterile

For more information  
 please refer to the data sheets.



## LAB COAT

Disposable Non - woven Lab Coat is made of non woven PP or SMS to seal the surface and provide protection from fluids. Non-toxic, no odor, does not irritate the skin .

The closure with velcro, zipper or buttons make the lab coat easy to take on or take off.

This breathable lab coat which is fit for use in food processing, dental clinics and science laboratories, and offers unmatched comfort and protection to the user's clothes from dry stuff.

### COLORS



### SERVICES



SIZE	S	M	L	XL	2XL	3XL	4XL	Average
A	96	99	102	105	108	111	114	+/- 3cm
B	61	64	67	70	73	76	79	+/- 3cm
C	56	56	56	56	56	58	58	+/- 3cm

## SV- 189

### DETAILS

Model: SV- 189 series  
 Fabric: SS-SMS-SMMS  
 Weight: 20-80 GSM  
 Cuff: Elastic, Knitted  
 Color: Blue/Yellow/Green/White  
 Stitch: Overlock/Welded  
 Other: Desings with two or three pockets  
 Optional: Sterile/Non Sterile

For more informatin  
 please refer to the data sheets.

# Coveralls

## FOR SAFETY OF ALL IN HEALTHCARE SETTINGS

Disposable coveralls ensure protection against infective agents, chemical splashes and other particles. Manufactured of a soft and breathable material coveralls offer comfort and full-body protection.

 **PODiMA**

 **SUVICOM**<sup>®</sup>

 **rowimed**<sup>®</sup>

**Raddax**<sup>®</sup>





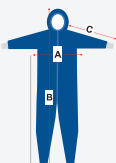
## DISPOSABLE COVERALL TYPE 5B/6B

Disposable coverall ensures protection against infective agents, chemical splashes and other particles. Manufactured of a soft and breathable material this coverall offers comfort and high-level protection. The coverall is equipped with hood, self-adhesive zipper, secure and convenient closures with bands on hoods, arms and legs. These coveralls can be applicable in various areas such as handling chemicals in dust and powder form, varnishing and protection against paint splashes, fiberglass production and processing, industrial cleaning and maintenance, automotive industry, grinding and polishing, mining and quarrying, demolition and refurbishment, working with asbestos, wood and metal processing, construction industry and pharmaceutical industry.

### ■ COLORS



### ■ SERVICES



SIZE	S	M	L	XL	2XL	3XL	4XL	Tolerans
A	55	60	65	70	75	80	85	+/- 3 cm
B	188	190	192	194	196	198	200	+/- 3 cm
C	74	76	78	80	82	84	86	+/- 3 cm

## SV- 100

### DETAILS

- Model: SV- 100 series
- Fabric: Spunbond hotmelt polyethylen, PP + PE
- Weight: 40-80 GSM
- Cuff: Elastic
- Color: White
- Stitch: Overlock
- Other: Waist and neck straps for a secure fit
- Optional: Static/Antistatic  
Sterile/Non Sterile  
Ultrasonic seam

For more informatin  
please refer to the data sheets.





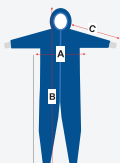
## DISPOSABLE COVERALL (SMS - PP+PE) Without Hood

These coveralls offer comfort and are durable, breathable and water-resistant. The fabric is also silicone- and allergy-free. The coverall is equipped with hood, self-adhesive zipper, secure and convenient closures with bands on hoods, arms and legs. The welded stripes offer greater protection for liquids. These coveralls can be applicable in medical and industrial settings and conditions in which one works with dangerous biological and chemical substances.

### COLORS



### SERVICES



SIZE	S	M	L	XL	2XL	3XL	4XL	Tolerans
A	55	60	65	70	75	80	85	+/- 3 cm
B	160	162	164	166	168	170	172	+/- 3 cm
C	74	76	78	80	82	84	86	+/- 3 cm

## SV-107

### DETAILS

Model: SV-107 series  
 Fabric: SMS, PP+PE  
 Weight: 20-80 GSM  
 Cuff: Elastic  
 Color: White  
 Stitch: Overlock  
 Optional: Static/Antistatic

For more information  
 please refer to the data sheets.



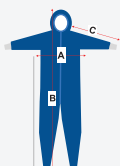
## DISPOSABLE COVERALL TYPE 3B/4B THERMO BAND STRIPED

Disposable coverall ensures protection against infective agents, chemical splashes and other particles. Manufactured of a soft and breathable material this coverall offers comfort and protection. The coverall is equipped with hood, self-adhesive zipper, secure and convenient closures with bands on hoods, arms and legs. These coveralls can be applicable in various areas such as handling chemicals in dust and powder form, varnishing and protection against paint splashes, fiberglass production and processing, industrial cleaning and maintenance, automotive industry, grinding and polishing, mining and quarrying, demolition and refurbishment, working with asbestos, wood and metal processing, construction industry and pharmaceutical industry.

### ■ COLORS



### ■ SERVICES



SIZE	S	M	L	XL	2XL	3XL	4XL	Tolerans
A	55	60	65	70	75	80	85	+/- 3 cm
B	188	190	192	194	196	198	200	+/- 3 cm
C	74	76	78	80	82	84	86	+/- 3 cm

## SV- 110

### DETAILS

Model: SV- 110 series  
 Fabric: Spunbond hotmelt polyethylen, PP + PE  
 Weight: 55-80 GSM  
 Cuff: Elastic  
 Color: White  
 Stitch: Ultrasonic stripe  
 Other: Waist and neck straps for a secure fit  
 Optional: Static/Antistatic  
 Sterile/Non Sterile

For more informatin  
please refer to the data sheets.



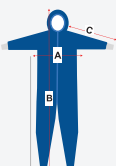
## DISPOSABLE COVERALL TYPE 3B/4B ULTRASONIC

Disposable coverall ensures protection against infective agents, chemical splashes and other particles. Manufactured of a soft and breathable material this coverall offers comfort and high-level protection. The coverall is equipped with hood, self-adhesive zipper, secure and convenient closures with bands on hoods, arms and legs. These coveralls can be applicable in various areas such as handling chemicals in dust and powder form, varnishing and protection against paint splashes, fiberglass production and processing, industrial cleaning and maintenance, automotive industry, grinding and polishing, mining and quarrying, demolition and refurbishment, working with asbestos, wood and metal processing, construction industry and pharmaceutical industry.

### ■ COLORS



### ■ SERVICES



SIZE	S	M	L	XL	2XL	3XL	4XL	Tolerans
A	55	60	65	70	75	80	85	+/- 3 cm
B	188	190	192	194	196	198	200	+/- 3 cm
C	74	76	78	80	82	84	86	+/- 3 cm

## SV- 113

### DETAILS

Model:	SV- 113 series
Fabric:	Spunbond hotmelt polyethylen, PP + PE
Weight:	40-80 GSM
Cuff:	Elastic
Color:	White
Stitch:	Overlock+Thermoband stripe
Other:	Waist and neck straps for a secure fit
Optional:	Static/Antistatic Sterile/Non Sterile Ultrasonic seam

For more informatin  
please refer to the data sheets.



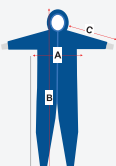
## HI-VIS REFLECTIVE WORKWEAR COVERALL

Stay safe and visible in our High-Visibility Disposable Protective Coverall with Reflective Tape. Designed for both protection and visibility, this coverall is perfect for a wide range of applications, including construction, road work, industrial, and emergency response environments. Made from high-quality, breathable Microporous material, this coverall features reflective tape to enhance visibility in low-light situations, ensuring your safety while on the job.

### COLORS



### SERVICES



SIZE	S	M	L	XL	2XL	3XL	4XL	Tolerans
A	55	60	65	70	75	80	85	+/- 3 cm
B	188	190	192	194	196	198	200	+/- 3 cm
C	74	76	78	80	82	84	86	+/- 3 cm

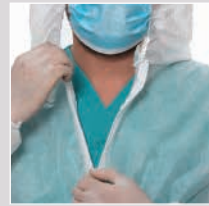
## SV- 116

### DETAILS

Model: SV- 116 series  
 Fabric: SMS or Microporous PE Laminated  
 Weight: 40-90 GSM  
 Cuff: Elastic / Knitted cuff  
 Stitch: Overlock/ Ultrasonic stripe  
 Ergonomically shaped hood  
 Reflective tape  
 Anti-static  
 Optional: Sterile/Non Sterile

For more information,  
 please refer to the data sheets.





## DISPOSABLE COVERALL (SMS)

These coveralls offer comfort and are durable, breathable and water-resistant. The fabric also silicone- and allergy-free. The coverall is equipped with hood, self-adhesive zipper, secure and convenient closures with bands on hoods, arms and legs. The welded stripes offer greater protection for liquids. These coveralls can be applicable in medical and industrial settings and conditions in which one works with dangerous biological and chemical substances.

### SV- 188

#### DETAILS

Model: SV-188 series  
Fabric: Spunbond+meltblown+spunbond  
Weight: 20-80 GSM  
Cuff: Elastic  
Color: White  
Stitch: Overlock

[For more informatin please refer to the data sheets.](#)

## DISPOSABLE COVERALL (SS)

These coveralls offer comfort and are durable, breathable and water-resistant. The fabric is also silicone- and allergy-free. The coverall is equipped with hood, self-adhesive zipper, secure and convenient closures with bands on hoods, arms and legs. These coveralls can be applicable in medical and industrial settings.

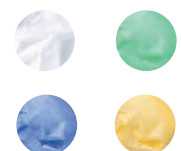
### SV- 187

#### DETAILS

Model: SV-187 series  
Fabric: Spunbond+Spunbond  
Weight: 20-80 GSM  
Cuff: Elastic  
Color: White  
Stitch: Overlock

[For more informatin please refer to the data sheets.](#)

#### COLORS



#### SERVICES



# Hoods & Bonnet

FOR SAFETY OF ALL IN HEALTHCARE SETTINGS

Disposable hoods ensure multiple protections for open wounds during surgeries. Additionally, disposable hoods avoid food to be contaminated by hair or dandruff in food industry or gastronomy.



 **PODiMA**

 **SUVICOM**<sup>®</sup>

 **rowimed**<sup>®</sup>

**Raddax**<sup>®</sup>

	<h3>SV- 49   Round Elastic Bonnet Cap</h3>	<p>Made of spunbond + polypropylene, soft and breathable fabric these caps be used by surgeons, nurses, physicians and other workers involved in patient care in hospitals. Equipped with elastic band around the head, these caps provide secure fit and offer complete hair coverage.</p>	<p><b>DETAILS</b>            Fabric : SS , SMS, PP+PE            Weight : 20- 60 gr</p>	<p>Double stich            Anti_allergic.</p>	
	<h3>SV- 50   Operation Bonnet</h3>	<p>Surgical bonnets are used to prevent contamination of the surgical, medical or hygiene sites by microorganisms originating from the hair of scalp of staff. These protective bonnets are applicable in medical, health, beauty and pharmaceutical settings.</p>	<p><b>DETAILS</b>            Fabric : SS , SMS            Weight : 20- 60 gr</p>	<p>Double stich            Anti_allergic.</p>	
	<h3>SV- 51   Astro Hood</h3>	<p>ASTRO Hoods are disposable surgical caps in astro-form, made of light material which protects from contamination. ASTRO hoods are applicable in high-contaminated medical settings, such as operating rooms. The size of an ASTRO Hood is individually adjustable.</p>	<p><b>DETAILS</b>            Fabric : SS , SMS            Weight : 20- 60 gr</p>	<p>Double stich            Anti_allergic.</p>	
	<h3>SV- 52   Barret Hood</h3>	<p>Breathable, dustproof disposable fleece caps which are made of environment- and skin-friendly material. Barret hoods offer effective protection against dust, fine dust, low-risk liquids and spraying. Ideal for hygiene, laboratory, industrial, medical settings.</p>	<p><b>DETAILS</b>            Fabric : SS            Weight : 10- 20 gr</p>	<p>Elastic            Anti_allergic.</p>	
	<h3>SV- 53   Surgical Hoods With Ties</h3>	<p>Surgical hoods with ties are made of light-weight and comfortable fabric and provides, our hood provides complete head, neck and shoulder coverage. Adjustable back ties allow for a personalized fit.</p>	<p><b>DETAILS</b>            Fabric : SS , SMS, PP+PE            Weight : 20- 60 gr</p>	<p>Elastic            Anti_allergic.</p>	
	<h3>SV- 54   Headgear With Cape</h3>	<p>Surgical hoods with ties are made of light-weight and comfortable fabric and provides, our hood provides complete head, neck and shoulder coverage. Adjustable back ties allow for a personalized fit.</p>	<p><b>DETAILS</b>            Fabric : SS , SMS, PP+PE            Weight : 20- 60 gr</p>	<p>Elastic            Anti_allergic.</p>	
	<h3>SV- 55   PE Cap</h3>	<p>Disposable PE Shower Cap is made of superior quality, durable plastic, guaranteed not to tear during your bathing time. Enjoy your shower without fear of water getting through the transparent cap!</p>	<p><b>DETAILS</b>            Fabric : PE            Weight : 9 - 20 Micron</p>	<p>Elastic            Anti_allergic.</p>	

# Shoe Covers

## FOR SAFETY OF ALL IN HEALTHCARE SETTINGS

Applicable in medical sector and food industry, shoe covers avoid contamination and offer protection both for ground (e.g. sandy shoes on damp ground) and shoes (e.g. protection from dust or paints during renovation works).

 **PODiMA**

 **SUVICOM**<sup>®</sup>

 **rowimed**<sup>®</sup>

**Raddax**<sup>®</sup>





### SV- 150 | Boot Cover

Long boot covers provide protection against infectious viruses. Long boot covers are tear-resistant non-slip premium quality with ergonomic construction that provides ease of use and better fit. At the same time, they offer a high level of breathability due to air permeability. They are made of materials repellent to water-based liquids and spray mist and are antistatic. Elasticity at the ankle allows one to put on the boot covers easily.

#### DETAILS

Fabric: PP +PE  
 Weight: 30 -70 GSM  
 Stitch: Overlock  
 Optional: Ultrasonic seams, Non-slip velcro tape



### SV- 151 | Thermo Band Striped Long Boot Cover

Long boot covers provide protection against infectious viruses. The heat-sealed tape on the seams prevents leakage and makes it the perfect accessory for our jumpsuit. Long boot covers are tear-resistant non-slip premium quality with ergonomic construction that provides ease of use and better fit. Elastic band and laces on the upper part provide extra coverage.

#### DETAILS

Fabric: PP+PE + Thermoband  
 Weight: 40-80 GSM  
 Stitch: Overlock  
 Optional: Ultrasonic seams, Non-slip velcro tape



### SV- 152 | Short Overshoe

Overshoes complete our protective coveralls and provide additional protection against infectious viruses. Overshoes Laminated is microporous and its seams are hidden and do not permeate. Sare made of ewn from premium-light and easy-to-wear PP NONWOVEN fabric which is Made of soft durable , breathable and water resistant fabric. They have non-slip soles, lace up and extra They come with elastic band at the top for protection.

#### DETAILS

Fabric: PP+PE  
 Weight: 30-80 GSM  
 Stitch: Overlock  
 Optional: Ultrasonic seams, Non-slip velcro tape





### SV- 60 | Shoe Cover Simple

Liquid-resistant overshoes are ideal for footwear hygiene and prevent potentially hazardous material from coming in contact with the bottom of a person's shoes. Thanks to the incorporated latex rubber, overshoes sit perfectly on feet and close tightly around ankles. With thicker materials, these overshoes are particularly easy to wear and do not tear quickly.

#### DETAILS

Fabric: PE Thickness: 9-40 Micron  
 Stitch: Rope stitch technology is used to avoid shoe cover ladders  
 Other: Reinforced double elastic band, liquid-proof, non-slip, tear-proof - Produced in automatic machines without being touched Compressed vacuum packaging



### SV- 63 | SMS Long Boot Cover

This latex-free boot cover has breathable, fluid-resistant SMS material above the ankle, and a fluid-proof polypropylene coat below the ankle, providing maximum fluid protection. The heat-sealed seams reduce the chance of fluid penetration. The tread on the bottom helps provide excellent traction and increases stability. Knee High.

#### DETAILS

Fabric: SS or SMS  
 Weight: 20-80 GSM  
 Stitch: Overlock  
 Optional: Ultrasonic seams, Non-slip velcro tape

# Mask

**FOR SAFETY OF ALL IN HEALTHCARE SETTINGS**

Masks provide protection against harmful particles  
thanks to their high filtering performance.

 **PODiMA**

 **SUVICOM<sup>®</sup>**

 **rowimed<sup>®</sup>**

**Raddax<sup>®</sup>**





**HIGH FILTRATION  
EFFICIENCY**



**HEALTHY  
BREATHING**



**5-LAYER OF  
PROTECTION**

## FFP2 MASKS

### FFP2 MASKS NR D

FFP2 Mask provides protection against harmful particles thanks to its high filtering performance. FFP2 mask with its water-repellent outer layer, is an effective personal protective equipment in protection from hazardous aerosols, gases and evaporations. It ensures convenient vision for eyeglass wearers and ease of use with its foldable shape.

#### COLORS



#### SERVICES



**CE 2841** | **MADE IN  
TÜRKİYE**

**SV- 130**      **SV- 131**  
**SV- 130-D**    **SV- 131-D**

#### DETAILS

Model: SV- 130-SV-131  
SV-130-D - SV-131-D  
Fabric: Spunbond + Meltblown  
Sizes: Small / Medium / Standard  
Weight: 150-180 GSM  
Color: Black/White  
Filtration: Efficiency ≥ 95%

For more informatin  
please refer to the data sheets.





## SURGICAL MASKS

Surgical masks provide protection against infections and an array of pathogens and airborne particles. Without obstructing breath, the mask is made of light, soft and skin-friendly material and secure comfortable fit with integrated adjustable strip clip for nose bridge.

## KIDS MASKS

Surgical masks provide protection against infections and an array of pathogens and airborne particles. Without obstructing breath, the mask is made of light, soft and skin-friendly material and secure comfortable fit with integrated adjustable strip clip for nose bridge.

### 2000R

#### DETAILS SURGICAL MASKS

Fabric: Spunbond + Meltblown  
 Weight: 70-80 GSM  
 Stitch: Ultrasonic seam  
 Filtration: BFE > 95%  
 Other: EU Type IIR I ASTM LVL 1

Adjustable nose wire, Anti Allergic  
 Air Permeable, Soft ear loops  
 Splash resistant, Hygienic and hypoallergenic

### 2000R - K

#### DETAILS KIDS MASK

Fabric: Spunbond + Meltblown  
 Weight: 70-80 GSM  
 Stitch: Ultrasonic seam  
 Filtration: BFE > 95%  
 Other: EU Type IIR I ASTM LVL 1

Adjustable nose wire, Anti Allergic  
 Air Permeable, Soft ear loops  
 Splash resistant, Hygienic and hypoallergenic  
 Optional Coloroud Funy design

For more informatin  
 please refer to  
 the data sheets.

#### SERVICES



# Disposable Bed Sheet



## BED SHEET

Bed covers are ideal for any type of medical table, stretcher or patient bed. This includes hospital bed mattress cover for ambulance stretchers through to hospitality linens. They can be used in patient rooms in hospitals, clinics, or patient care facilities.

### DETAILS

Fabric: SMS, SS  
 Weight: 35-60 GSM  
 Color: White/Green/Blue

#### COLORS



#### SERVICES



## BED COVER

Made of non-woven fabric, disposable bed cover can reduce the risk of cross-infection effectively. Bed cover is soft, economic, lightweight, and breathable. Bed covers are also equipped with elastic bands on the two sides which is more convenient to use, and offer more protection. It is one of the best choices for patients' health in medical facilities.

### DETAILS

Fabric: SMS, SS  
 Weight: 35-60 GSM  
 Color: White/Green/Blue

# Disposable Towel & Sheet

**HYGIENIC | ECO | ANTI BACTERIAL**  
**ZERO BACTERIAL RISK**

Absorbs water and dries body after showering.  
Resists tearing when wet for more drying.  
Great for travel, camping, long rides or daily use.  
3 times absorbing more than cotton towels.

 **PODiMA**

 **SUVICOM®**

 **rowimed®**

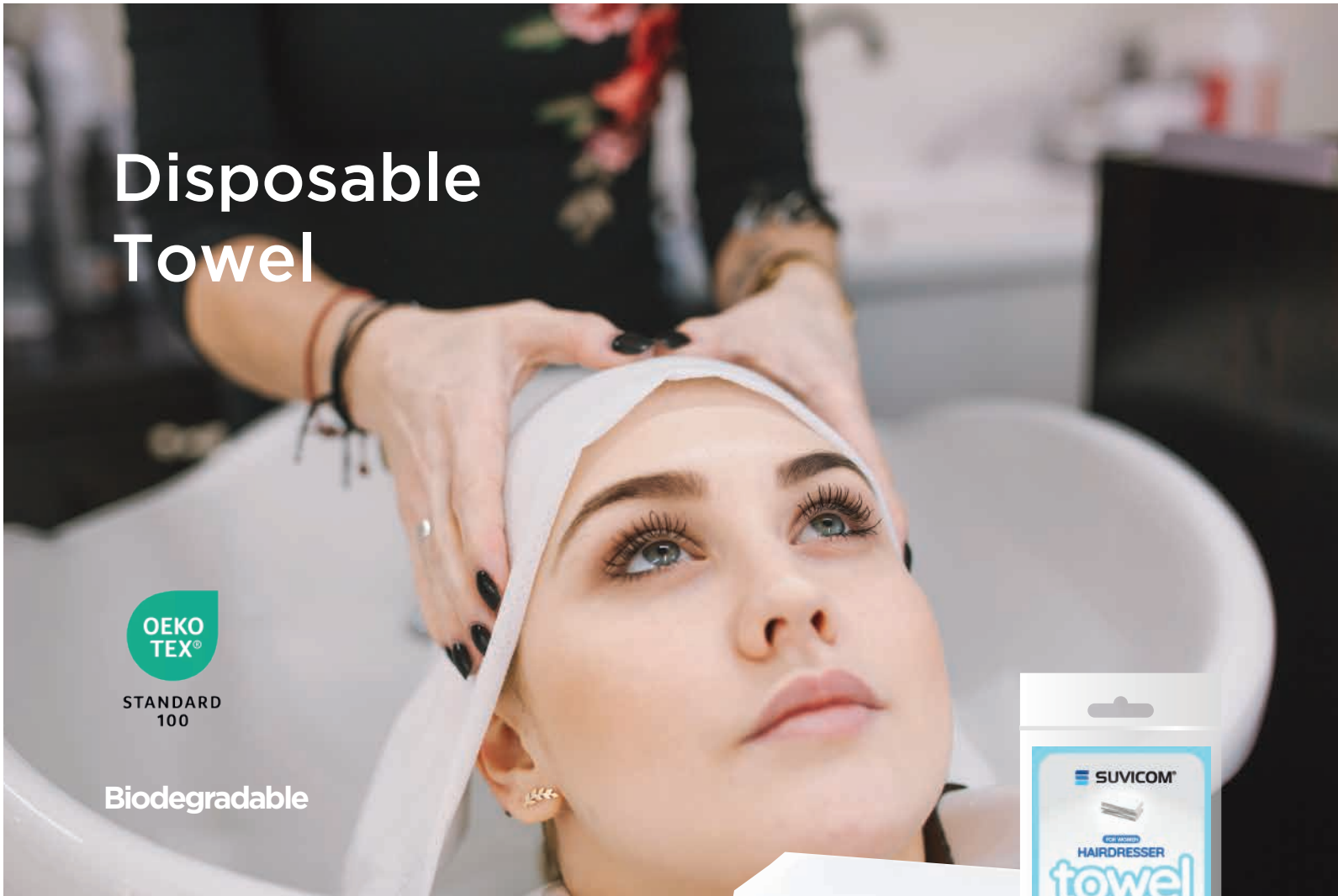
 **Raddax®**

# Disposable Towel



STANDARD 100

Biodegradable



## SV- 630 | Hairdresser Towel **FOR WOMEN**

Absorbs water and dries body after showering  
Resists tearing when wet for more drying Great for travel, camping, long rides, or daily use.

SIZE  
**40 x 80 cm**  
(16" x 31")

THICKNESS  
STANDART  THICK   
50gsm / m<sup>2</sup>

**1**   
PER PACK DO NOT REUSE

## SV- 631 | Hairdresser Towel **FOR MEN**

Absorbs water and dries body after showering  
Resists tearing when wet for more drying Great for travel, camping, long rides, or daily use.

SIZE  
**30x60 cm**  
(12" x 24")

THICKNESS  
STANDART  THICK   
50gsm / m<sup>2</sup>

**1**   
PER PACK DO NOT REUSE

## SV- 632 | Feet Towel

Absorbs water and dries body after showering  
Resists tearing when wet for more drying Great for travel, camping, long rides, or daily use.

SIZE  
**40 x 40 cm**  
(16" x 16")

THICKNESS  
STANDART  THICK   
70gsm / m<sup>2</sup>

**1**   
PER PACK DO NOT REUSE



**SV- 633 | Hand Towel**

Absorbs water and dries body after showering  
Resists tearing when wet for more drying Great for travel, camping, long rides, or daily use.

SIZE  
**40 x 40 cm**  
(16" x 16")

THICKNESS  
STANDART  THICK   
50gsm / m<sup>2</sup>

**1** PER PACK **DO NOT REUSE**

**SV- 634 | Sports/Gym Towel**

Absorbs water and dries body after showering  
Resists tearing when wet for more drying Great for sport, travel, camping, long rides, or daily use.

SIZE  
**40 x 80 cm**  
(16" x 31")

THICKNESS  
STANDART  THICK   
70gsm / m<sup>2</sup>

**1** PER PACK **DO NOT REUSE**

**SV- 635 | Bath Towel**

Absorbs water and dries body after showering  
Resists tearing when wet for more drying Great for travel, camping, long rides, or daily use.

SIZE  
**60 x 120 cm**  
(24" x 47")

THICKNESS  
STANDART  THICK   
50gsm / m<sup>2</sup>

**1** PER PACK **DO NOT REUSE**

**SV- 636 | Bath Towel**

Absorbs water and dries body after showering  
Resists tearing when wet for more drying Great for Sport, travel, camping, long rides, or daily use.

SIZE  
**80x140 cm**  
(31" x 55")

THICKNESS  
STANDART  THICK   
50gsm / m<sup>2</sup>

**1** PER PACK **DO NOT REUSE**

**SV- 637 | Pet Towel** **FOR FRIENDS**

Absorbs water and dries body after showering  
Resists tearing when wet for more drying Great for Pet, travel, camping, long rides, or daily use.

SIZE  
**80 x 140 cm**  
(31" x 55")

THICKNESS  
STANDART  THICK   
70gsm / m<sup>2</sup>

**1** PER PACK **DO NOT REUSE**



## Disposable Towel Set

**SV- 638 | Towel Set**  
Set of 3 (Hair, bath, foot)

Absorbs water and dries body after showering Resists tearing when wet for more drying Great for travel, camping, long rides, or daily use.

THICKNESS  
STANDART  THICK   
50gsm / m<sup>2</sup>

**1** PER PACK **DO NOT REUSE**

SIZE / HAIR  
**40 x 80 cm**  
(16" x 31")

SIZE / BATH  
**80 x 140 cm**  
(31" x 55")

SIZE / FOOT  
**40 x 45 cm**  
(16" x 18")

**SV- 639 | Towel Set**  
Set of 2 (Hair, bath)

Absorbs water and dries body after showering Resists tearing when wet for more drying Great for travel, camping, long rides, or daily use.

THICKNESS  
STANDART  THICK   
70gsm / m<sup>2</sup>

**1** PER PACK **DO NOT REUSE**

SIZE / HAIR  
**40 x 80 cm**  
(16" x 31")

SIZE / BATH  
**80 x 140 cm**  
(31" x 55")



# Disposable Bed Set

Biodegradable



STANDARD 100

Personal use disposable bed set is hygienic and ultra light. It doesn't contain any synthetic material and doesn't cause sweat. It holds zero bacteria risk.

<p><b>SV- 640   Single Bed Set</b> 1 Bed sheet, 1 pillowcase, 1 duvet cover</p> <p>Disposable duvet cover set is hygienic and ultra-light. Travel, Hospital, hotel, camping, caravan, yacht, Personal use...</p>		<p><b>BED SHEET</b> <b>160x 200 cm</b> (64" x 80")</p>
<p><b>THICKNESS</b> STANDART <input checked="" type="checkbox"/> THICK <input type="checkbox"/> 50gsm / m<sup>2</sup></p>		<p><b>PILLOW CASE</b> <b>50x 70 cm</b> (20" x 28")</p>
<p><b>1 SET PACK</b> <b>DO NOT REUSE</b></p>		<p><b>DUVET COVER</b> <b>160x 200 cm</b> (64" x 80")</p>

<p><b>SV- 641   Double Bed Set</b> 1 Bed sheet, 2 pillowcase, 1 duvet cover</p> <p>Disposable duvet cover set is hygienic and ultra-light. Travel, Hospital, hotel, camping, caravan, yacht, Personal use...</p>		<p><b>BED SHEET</b> <b>200x 240 cm</b> (80" x 96")</p>
<p><b>THICKNESS</b> STANDART <input checked="" type="checkbox"/> THICK <input type="checkbox"/> 50gsm / m<sup>2</sup></p>		<p><b>PILLOW CASE</b> <b>50x 70 cm</b> (20" x 28")</p>
<p><b>1 SET PACK</b> <b>DO NOT REUSE</b></p>		<p><b>DUVET COVER</b> <b>160x 200 cm</b> (80" x 96")</p>

# Disposable Travel Set

Personal use disposable bed set is hygienic and ultra light. It doesn't contain any synthetic material and doesn't cause sweat. It holds zero bacteria risk.

<p><b>SV- 642   Single Travel Set</b> 1 Bath towel, 1 Hair towel, 1 Foot towel 1 Bed Sheet, 1 Pillow Case</p> <p>Disposable duvet cover set is hygienic and ultra-light. Travel, Hospital, hotel, camping, caravan, yacht, Personal use...</p>		<p><b>BATH TOWEL</b> <b>80x 140 cm</b> (31" x 55")</p>	<p><b>FOOT TOWEL</b> <b>40x 45 cm</b> (16" x 18")</p>
<p><b>THICKNESS</b> STANDART <input checked="" type="checkbox"/> THICK <input type="checkbox"/> 50gsm / m<sup>2</sup></p>		<p><b>HAIR TOWEL</b> <b>40x 80 cm</b> (16" x 31")</p>	<p><b>PILLOW CASE</b> <b>50x 70 cm</b> (20" x 28")</p>
<p><b>1 SET PACK</b> <b>DO NOT REUSE</b></p>		<p><b>DUVET COVER</b> <b>160x 200 cm</b> (63" x 79")</p>	

<p><b>SV- 643   Double Travel Set</b> 2 Bath towel, 2 Hair towel, 2 Foot towel 1 Bed Sheet, 2 Pillow Case</p> <p>Disposable duvet cover set is hygienic and ultra-light. Travel, Hospital, hotel, camping, caravan, yacht, Personal use...</p>		<p><b>BATH TOWEL</b> <b>80x 140 cm</b> (31" x 55")</p>	<p><b>FOOT TOWEL</b> <b>40x 45 cm</b> (16" x 18")</p>
<p><b>THICKNESS</b> STANDART <input checked="" type="checkbox"/> THICK <input type="checkbox"/> 50gsm / m<sup>2</sup></p>		<p><b>HAIR TOWEL</b> <b>40x 80 cm</b> (16" x 31")</p>	<p><b>PILLOW CASE</b> <b>50x 70 cm</b> (20" x 28")</p>
<p><b>1 SET PACK</b> <b>DO NOT REUSE</b></p>		<p><b>DUVET COVER</b> <b>160x 200 cm</b> (63" x 79")</p>	



**SV- 644 | Double Duvet Case**

Disposable duvet cover set is hygienic and ultra-light. Travel, hospital, hotel, camping, caravan, yacht, Personal use...

SIZE  
**200 x 240 cm**  
(79" x 96")

THICKNESS  
STANDART  THICK   
50gsm / m<sup>2</sup>

1 PER PACK DO NOT REUSE

**SV- 645 | Single Duvet Case**

Disposable duvet cover set is hygienic and ultra-light. Travel, hospital, hotel, camping, caravan, yacht, Personal use...

SIZE  
**160 x 200 cm**  
(63" x 79")

THICKNESS  
STANDART  THICK   
50gsm / m<sup>2</sup>

1 PER PACK DO NOT REUSE

**SV- 646 | Double Bed Sheet**

Disposable duvet cover set is hygienic and ultra-light. Travel, hospital, hotel, camping, caravan, yacht, Personal use...

SIZE  
**200 x 240 cm**  
(79" x 96")

THICKNESS  
STANDART  THICK   
50gsm / m<sup>2</sup>

1 PER PACK DO NOT REUSE

**SV- 647 | Single Bed Sheet**

Disposable duvet cover set is hygienic and ultra-light. Travel, hospital, hotel, camping, caravan, yacht, Personal use...

SIZE  
**160 x 200 cm**  
(63" x 79")

THICKNESS  
STANDART  THICK   
50gsm / m<sup>2</sup>

1 PER PACK DO NOT REUSE

**SV- 648 | Single Pillow Case**

Disposable duvet cover set is hygienic and ultra-light. Travel, hospital, hotel, camping, caravan, yacht, Personal use...

SIZE  
**50 x 80 cm**  
(20" x 31")

THICKNESS  
STANDART  THICK   
50gsm / m<sup>2</sup>

1 PER PACK DO NOT REUSE

# Disposable Massage Sheet & Sun longer Cover

Biodegradable

## SV- 649 | Spa Massage Sheet

Disposable duvet cover set is hygienic and ultra-light. Hospital, hotel, yacht, Professional use...

SIZE  
**80 x 200 cm**  
(31" x 79")

THICKNESS  
STANDART  THICK   
50gsm / m<sup>2</sup>

**1**  
PER  
PACK **DO NOT  
REUSE**

## SV- 650 | Spa Massage Sheet (hole)

Disposable duvet cover set is hygienic and ultra-light. Hospital, hotel, yacht, Professional use...

SIZE  
**80 x 200 cm**  
(31" x 79")

THICKNESS  
STANDART  THICK   
50gsm / m<sup>2</sup>

**1**  
PER  
PACK **DO NOT  
REUSE**

## SV- 651 | Sun Longer Cover

Disposable duvet cover set is hygienic and ultra-light. Hospital, hotel, yacht, Professional use...

SIZE  
**80 x 220 cm**  
(31" x 87")

THICKNESS  
STANDART  THICK   
50gsm / m<sup>2</sup>

**1**  
PER  
PACK **DO NOT  
REUSE**

## SV- 652 | Sun Longer Cover with pouch

Disposable duvet cover set is hygienic and ultra-light. Beach, hotel, yacht, Professional use...

SIZE  
**80 x 200 cm**  
(31" x 79")

THICKNESS  
STANDART  THICK   
50gsm / m<sup>2</sup>

**1**  
PER  
PACK **DO NOT  
REUSE**



# Our Certificates

## Certificates Modul B



## Certificates Modul C2



## Certificates

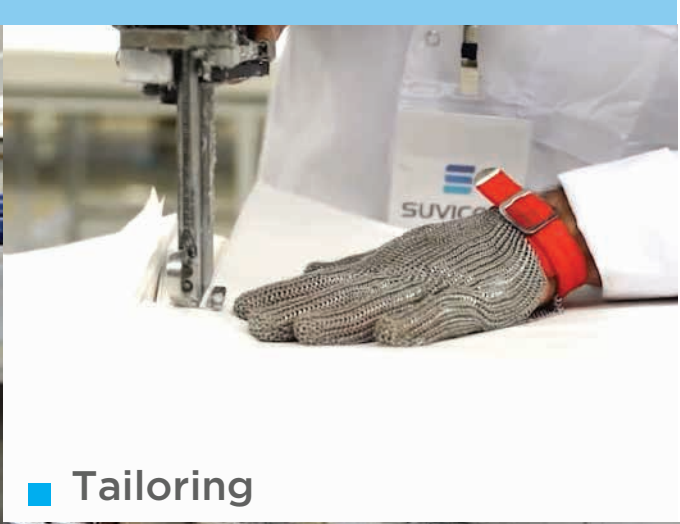


## Test Reports





# Production Process



## How is production carried out

Production process and management are conducted based on the internationally accepted Strict hygiene standards. The products are duly packaged and delivered to the end users on time following the guiding hygiene principles.



### **Fast delivery**

Fast delivery from our Europe central warehouse with high capacity Turkey based production.

### **EU certification**

In order to be able to offer the best protection and the greatest security in everyday working life, we only supply certified products.

### **Top products**

We only carry tested, certified and high quality products.

### **Fair prices**

Thanks to strong partnerships and optimized business processes, we can deliver on our products at fair prices.

## Declaration On Product Standards & Services



### **CATEGORY 3**

Liquid-tight protective clothing; Full body or full protection suits against liquid chemicals



### **EN 13688**

General requirement for protective clothing. EN ISO 13688:2013



### **EN 14126**

Protective clothing against infectious agents. EN 14126: 2003 + AC:2004



### **EN 14605 TYPE PB 3-B**

Liquid-tight protective clothing against liquid chemicals. EN 14605:2005 + A1:2009 TYP PB 3-B



### **EN 13034 TYPE PB 6-B**

Protective clothing against liquid chemicals with limited protection. EN 13034:2005 + A1:2009 TYP PB 6-B



### **EN 14605 TYPE PB 4-B**

Spray-tight protective clothing against liquid chemicals. EN 14605:2005+A1:2009



### **EN 13982 TYPE 5-B**

Protective clothing against airborne solid particles EN ISO 13982-2:2004 TYP 5



### **EN 1149**

Protective clothing with electrostatic properties EN 1149-1:2006

### **EN 13795**

Surgical drapes, gowns and clean air suits, used as medical devices for patients, clinical staff and equipment.



### **EN 1073-2:2002**

Protective clothing against radioactive contamination-part2

### **FFP2 NR D**

Passes EN 149:2001 optional Dolomite (D) clogging test for more comfortable breathing.

## Services



HOSPITAL



INDUSTRY



CORONA PROTECTION



EMERGENCY



HYGIENE



LABORATORY



# PODİMA

SUVICOM®

rowimed®

Raddax®



## About Podima

Our products are produced in accordance with our production infrastructure, expert staff and strict hygiene standards in Türkiye. Accordingly, our products are used and demanded safely in Europe and all over the world. Our quality, production and distribution performance has been appreciated by all our customers, especially during the pandemic period.

Our **SUVICOM** brand is primarily used in Germany and our other brand, **ROWIMED**, is used in Italy with its high quality and with confidence.

**Our Philosophy** Our goal is to supply quality medical PPEs and supplies reliably and continuously at fair prices. We are committed to ensure a gap-free supply chain system, and achieve highest customer satisfaction and sustainable partnerships.

Aiming highest supply standards, quality is key for us, which is ensured through constant controls and quality checks. We regularly do site visits to our manufacturers in order to personally convince ourselves of the production facilities, employees, materials and business processes. Only products duly certified are included in our portfolio.

## Imprint / Contact

Head Office  
**Podima** Medikal ve  
Tekstil San. Tic. Ltd. Şti.  
Şerifali Mh, Mevdudi Sk.  
No:53/1, 34775 Ümraniye  
İstanbul / Türkiye

Phone: +90 216 784 07 93  
+90 216 314 93 16  
Email: info@podimamedikal.com

■ Factory:  
Siirt Yolu Cad. 72100  
Merkez Batman / Türkiye

■ Branch Office  
**Suivicom Media GmbH**  
Lilienthalstr 14  
41515, Grevenbroich,  
Germany

Phone: +49 221 292033 31  
Email: info@suivicom.de  
Web: www.suivicom-medical.de

**Türkiye**  
Gücünü ve  
Potansiyelini Keşfet.